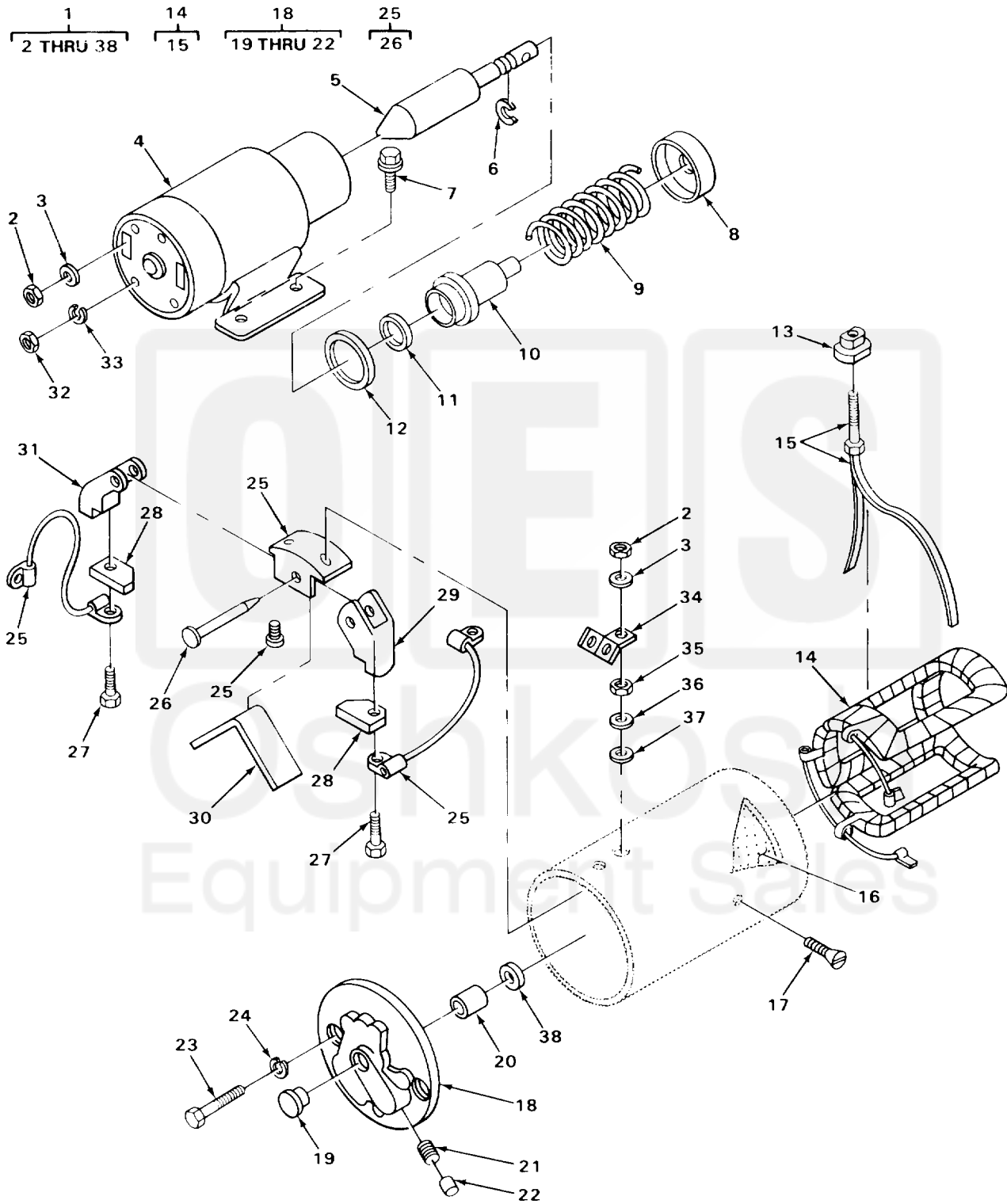


SECTION II

TM 10-3930-242-24P



TA705381

FIGURE 55. STARTER, UPPER HALF (MHE-222).

(1) ITEM NO	(2) SMR CODE	(3) CAGEC	(4) PART NUMBER	(5) DESCRIPTION AND USABLE ON CODES (UOC) GROUP 0603 STARTING MOTOR FIG. 55 STARTER, UPPER HALF (MHE-222)	(6) QTY
1	PFOFF	16764	1113250	STARTER, ENGINE, ELEC UOC: CQK, U72	1
2	PAOZZ	16764	1904419	.NUT, PLAIN, HEXAGON TERMINAL UOC: CQK, U72	3
3	PAOZZ	96906	MS35338-046	.WASHER, LOCK TERMINAL STUD UOC: CQK, U72	3
4	PAOZZ	16764	1115586	.RELAY-SOLENOID, ENGI UOC: CQK, U72	1
5	PAFZZ	16764	1948682	.PLUNGER, SOLENOID UOC: CQK, U72	1
6	PAFZZ	96906	MS16624-1037	.RING, RETAINING PLUNGER UOC: CQK, U72	1
7	PAOZZ	16764	1917084	.BOLT, ETERNALLY REL SWITCH MTG UOC: CQK, U72	4
8	PAFZZ	16764	1948526	.WASHER, RECESSED UOC: CQK, U72	1
9	PAFZZ	16764	1948521	.SPRING, HELICAL, COMP UOC: CQK, U72	1
10	PAFZZ	16764	801077	.BELLOWS, PROTECTION UOC: CQK, U72	1
11	PPFZZ	16764	1948519	.WASHER, FLAT RETAINER SPRING UOC: CQK, U72	1
12	PAFZZ	16764	1948520	.WASHER, RECESSED UOC: CQK, U72	1
13	PAFZZ	16764	1931783	.BUSHING, ELECTRICAL UOC: CQK, U72	1
14	PAFZZ	16764	1951857	.WINDING, STARTER-GEN UOC: CQK, U72	1
15	PAFZZ	16764	1933879	..TERMINAL AND CLIP A UOC: CQK, U72	1
16	PAFZZ	16764	1914873	.PLATE, INSULATION UOC: CQK, U72	2
17	PPFZZ	96906	MS35191-318	.SCREW, MACHINE UOC: CQK, U72	4
18	PAFZZ	16764	1946698	.END BELL, ELECTRICAL UOC: CQK, U72	1
19	PAFZZ	16764	810819	..PLUG, EXPANSION UOC: CQK, U72	1
20	PAFZZ	16764	1872678	..BEARING, SLEEVE UOC: CQK, U72	1
21	PAFZZ	16764	1916439	..WICK UOC: CQK, U72	1
22	PAFZZ	16764	274590	..PLUG, PIPE OIL HOLE UOC: CQK, U72	1
23	PAFZZ	16764	37872	.BOLT, MACHINE HOUSING END MTG UOC: CQK, U72	2
24	PPFZZ	96906	MS35338-44	.WASHER, LOCK HOUSING MTG	2